



# 115 years

of

## racial justice, diversity, & empowerment

eliminating racism  
empowering women

ywca

greater harrisburg

ywca of greater harrisburg  
annual report 2008-2009





# mission

The YWCA of Greater Harrisburg is dedicated to **eliminating racism, empowering** women and promoting **peace, justice, freedom** and **dignity** for all.

## Locations

John Crain Kunkel Center  
1101 Market Street  
Harrisburg, PA 17103  
(717) 234-1731

Kids on Campus  
1722 Valley Road  
Enola, PA 17025  
(717) 901-3637

Domestic Violence Legal Center  
114 Walnut Street  
Harrisburg, PA 17101  
(717) 724-0516

**24-hour crisis hotline: 1.800.654.1211**

## Dear friends and supporters,

The YWCA of Greater Harrisburg is used to overcoming adversity. In 2008 it came in the form of a serious economic downturn that has wreaked havoc on our region, state, and nation. Job loss, homelessness, hunger, overwhelming stress and violence were part of the fallout. People, who never in their wildest dreams thought they would have to seek assistance, have done so in order to save their families and themselves from further hardship.

In spite of this turmoil, the YWCA remained steadfast in serving the women and children who count on us day in and day out. This year was again an opportunity to demonstrate what we are made of – a resilient community that cares and leads in trying times. We continue to be proud of and committed to our mission and to the task of meeting the needs of individuals and families in the community.

We are very, very fortunate to have the support of a growing network of generous contributors, foundations, friends and government entities. Even while facing financial challenges of their own, they continued to believe that we were worthy of their gifts and investments. With them behind us, we exceeded several fund raising goals in 2008 to the tune of \$70,000. We also managed to maintain a standard of excellence in utilizing those resources soundly and efficiently, garnering even more trust.

Over the past year we have celebrated some tremendous achievements as a nation -- electing our first African American President, as a national organization -- the YWCA USA celebrated 150 years of eliminating racism and empowering women, and as a local association -- providing services to over 22,000 individuals in our community. As we reflect on these accomplishments, we are also mindful of the need to conserve resources and strengthen partnerships ensuring that the YWCA of Greater Harrisburg continues to be the cornerstone agency that provides people with the guidance and support necessary to succeed. Below are some highlights from the past year.

\*We completed a comprehensive strategic plan, which focuses on increasing our public image and raising more funds for our endowment program. This plan will guide us for the next three years as we continue to meet the needs of our community.

\*We established a junior board to encourage and engage women 30 year of age and younger in the work we do, as well as to provide them with the opportunity to develop leadership skills and an appreciation for the value of philanthropy.

\*We celebrated the 20th anniversary of the Tribute to Women of Excellence, an event that has honored 391 women in our community and raised funds essential to helping the women we serve.

\*We had another successful year with the Club and Camp Ophelia programs designed to address relational aggression (girl bullying) in middle school girls. These arts based programs enable us to provide girls with better tools for communicating and developing healthy friendships.

\*We increased the number of participants in the Race Against Racism with over 800 runners and walkers joining the effort. Funds raised support our racial justice initiatives. And, Tina ran and finished the 5K route!!

As we look back on 2008, let's remember why we are still standing. The dedicated staff and management team at YWCA of Greater Harrisburg are proud of their leadership role in eliminating racism and empowering women in the capital area, and are deeply committed to those we serve. Although the future is filled with uncertainties, we will continue to focus our collective energy on meeting the needs of the women, children and families in this community.

As always, thank you all for your support. We cannot do what we do without YOU!

Chief Executive Officer

Board President



# passion

# hope

# courage

# integrity

## programs

### CHILDREN AND YOUTH

We operate two child development centers, a summer day camp and before - and after -school programs. These programs are offered to children between 6 weeks and 12 years of age. Last year, our child development centers served 294 children. One-hundred and fifty children enrolled in our summer program at Camp Reilly, and 30 middle school girls enrolled in Club and Camp Ophelia, and arts-based program that addresses relational aggression.



### 30-DAY EMERGENCY SHELTER

Women and children escaping violence and homelessness can access safety and support. Case management is paramount in assisting these individuals in crisis to identify community resources that will be essential in regaining control of their lives. Last year 587 women and children found safe haven in our 30-day emergency shelter.

### BRIDGE & TRANSITIONAL HOUSING

Residents in the Bridge (1-year) and Transitional (2-year) housing programs have access to case management, counseling and life skills classes. Last year 100 women and children were enrolled in the programs for a total of 13,053 nights. Fifty percent went on to find permanent housing. We housed 30 women without children in Single Room Occupancy (SRO) units. Rent is paid on a sliding scale basis.

### DOMESTIC VIOLENCE & SEXUAL ASSAULT

Victims of domestic violence and sexual assault can access a wide variety of services. From the hotline (which received 1,737 calls), to counseling, support groups and accompaniments, victims, and non-offending family members can access the support they need to get their lives back on track. Last year 2,319 adult and 270 child victims were assisted by our Domestic Violence programs and services. Our Sexual Assault Program helped 299 adults and 553 children.



### VIOLENCE PREVENTION & EDUCATION

We provide age-appropriate educational programs in schools, as well as awareness training to members of churches and to civic groups. Education is also provided to professionals such as medical staff, lawyers and clergy. Last year 529 trainings were provided to 15,682 individuals.



### EMPLOYMENT EMPOWERMENT

The YW Works program provides training and support for those seeking not just a job, but a career. Participants must complete a series of five classes that cover topics ranging from resume writing and interviewing skills to business ethics and career planning. Matches are then made between job seekers and employers. Case managers stay in touch with participants to ensure success in retaining jobs. Last year 750 clients were served, including 114 Veterans who enrolled in YW-Works VETS Reintegration Program. One-hundred and sixty-four clients obtained employment. In addition, 418 community clients sought help from The Center for Education, Employment and Entrepreneurial Development in South Allison Hill.

### LEGAL CENTER

Victims of domestic violence are able to access free legal representation in protection from abuse, custody and divorce cases. Lawyers and legal advocates help to ensure that victims are able to effectively navigate the legal system. Last year our legal center staff assisted 1,023 clients in 1,469 cases, and our Visitation Center facilitated visits for 60 children with non-custodial parents and siblings in foster care.



# transforming lives



**S**ally (names have been changed to protect the survivor’s identity) lived on the west coast of the United States with her children and her second husband, John. John liked to break Sally’s nose. He liked to choke and beat Sally, and he denied her medical attention. John would force Sally to perform certain acts against her will and then post them on the internet. John also had fun games to play with Sally. He would lock her out of the house in the cold without a coat and see how long she could stay there. He would drive Sally into the depths of a dark forest and leave her there to find her way back home. The abuse and indignities were one thing, but then Sally lost custody of her children to her first husband, who had also been abusive. She was beaten and broken, but she wasn’t down and out. Sally picked up and fled. She fled to the YWCA of Greater Harrisburg where she was admitted to our 30-day shelter program.

During Sally’s stay, she worked intensively with her case manager to find safe housing, attend counseling sessions, complete the YW Works program, and begin to transition her life to a life free of violence. Today, Sally has relocated to another area where she is safe and has her own place. She is receiving treatment for post-traumatic stress from the abuse. Sally is planning to return to school to study law and is taking steps to become a volunteer advocate to help women as she was once helped.

**T**he Legal Center began assisting Susan (names changed to protect the client’s identity) in custody, divorce and support matters. Frank (also an alias) filed for custody and several days before the parties’ were to appear in court for a custody conference, he refused to return the children to Susan. On the day of the custody conference, Frank insisted on having primary custody of the children, despite the fact that the children had been living primarily with their mother since the parties’ separation several months earlier. With the help of the Legal Center’s attorney, the parties reached an agreement to share custody of the children. The Legal Center also assisted Susan in obtaining a divorce.

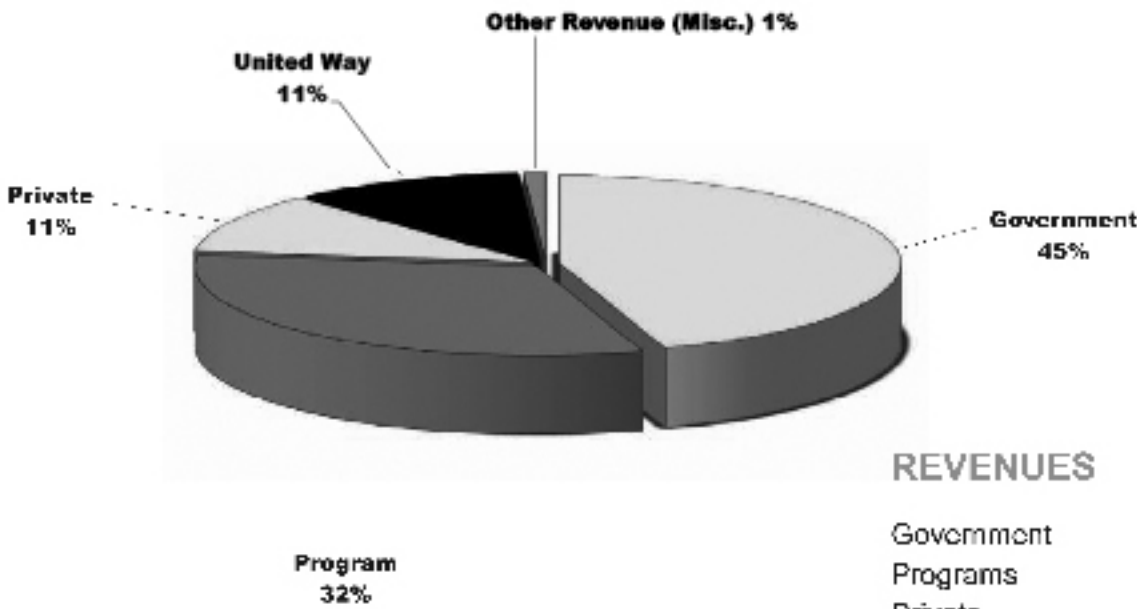
Two years later, the Legal Center attorney was served with an Emergency Petition for Custody filed by Frank’s attorney. He alleged that the children were in danger while in Susan’s care because her house was shot at more than 20 times. The bullets entered the house on all levels. Her car was also shot multiple times. Susan testified at the Emergency Custody hearing that she believed Frank orchestrated the shooting. After listening to her testimony regarding Frank’s violently abusive past conduct, the Judge dismissed Frank’s petition. The Legal Center represented Susan in obtaining a Final Protection from Abuse Order.

After a lengthy investigation by the local police, Frank was eventually arrested and charged with criminal solicitation to commit aggravated assault, criminal conspiracy to commit aggravated assault and aggravated assault in connection with the shooting at Susan’s house. Frank was unable to post bond and was incarcerated for six months before he was able to get his bail reduced. As soon as Frank was released from jail, the Legal Center filed an Emergency Petition for Custody and Susan was granted sole custody of the children pending a hearing.

The Legal Center’s attorney accompanied Susan to the criminal trial. At the hearing Frank pled guilty to the charges and was sentenced to a term of 5-8 years. He is currently serving that sentence.



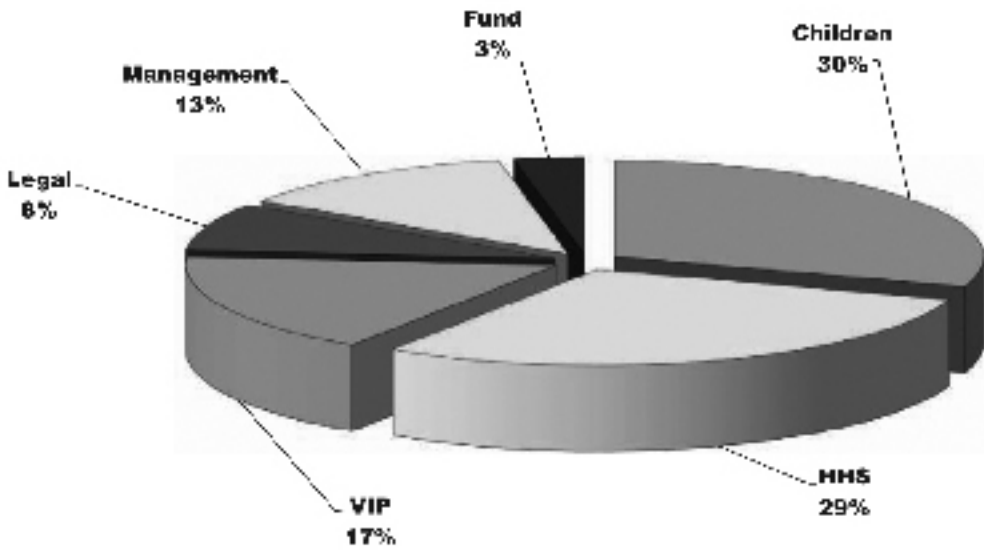
# financials



REVENUES

Government	45%	2,389,630
Programs	32%	1,697,118
Private	11%	591,473
United Way	11%	567,201
Other Revenue (Misc)	1%	30,089

TOTAL REVENUE & OTHER SUPPORT 100% 5,275,511



EXPENSES

Children	30%	1,574,875
Housing & Homelessness Services	29%	1,469,871
Domestic Violence & Sexual Assault	17%	912,779
Legal	8%	398,606
Management	13%	701,148
Fundraising	3%	175,154

TOTAL OPERATING EXPENSES 100% 5,232,233

# ywca of greater harrisburg 2008/2009

## board of directors

### Officers

Cheryl Sakalosky • President  
Valerie Corbin Ketchen • President Elect  
Janice Moore • Vice President  
Kim S. Phipps, Ph.D • Secretary  
Juliann M. Kullman • Treasurer  
Constance B. Foster, Esquire • Immediate Past President

### Members

Felicia L. Brown-Haywood, D.Ed  
Mary Ann Kennedy Claraval, Esquire  
Megan L. Consedine, Esquire  
Jewel Cooper  
Verona Dorch, Esquire  
Carole Forker Gibbons  
Esmeralda Ybarra Hetrick  
Deidre D. Lenker  
Deb E. Pajak  
Sue Rothman  
Robin Scaer  
Anne M. Shuman  
Alicelyn Watson Sleber  
Cynthia T. Tolsma  
Patty Wong, Esquire

## friends of the ywca board

### Officers

Susannah Rothman • President  
Julie Sullivan • Vice President  
Roni Trogner • Secretary  
Patti Brenckle • Treasurer

### Members

Alison Ballantine  
Patricia Foulkrod  
Judy Franklin  
Jean Grandon  
Jimmie Groves  
Erin Hoynes  
Lecia Jordan  
Jean King  
Judy Knupp  
Ann Kroh  
Dee Lewin  
Shirley Miller  
Maria Pavone  
Meg Ream  
Jamie Reed  
Cheryl Sardino Grandon  
Marie Schleicher  
Judy VanValkenburgh  
Debra Yates

## management

Tina I. Nixon • Chief Executive Officer  
Dwayne M. Milbrand • Vice President, Administration & Finance  
George Payne • Vice President, Programs  
Pamela B. Rhoads • Vice President, Resource Development